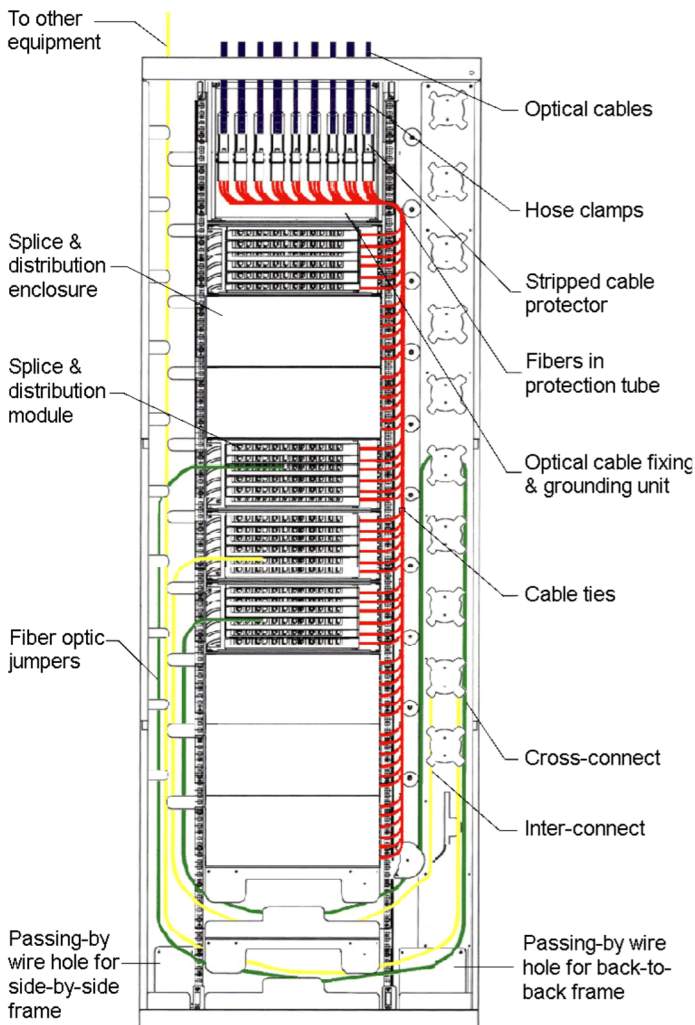
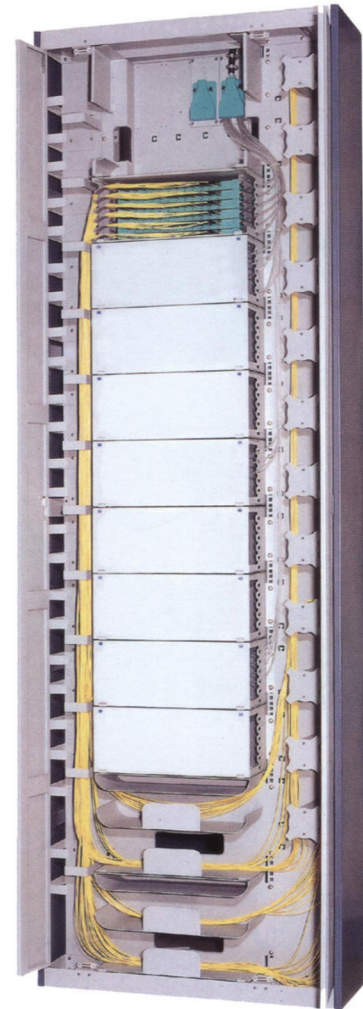


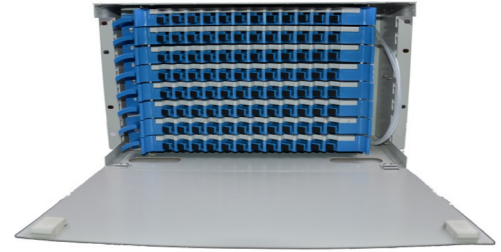
OPTICAL DISTRIBUTION FRAME (Rack System)

- Standard 19" installation; fully enclosed structure
- Full front operation; can be installed against wall, side-by-side or back-to-back
- Complete cable routing design with fiber bend radius over 40mm
- Modular design and easy installation
- Inlet/outlet cables from top or bottom
- Optimal arrangement for patch cords with fiber storage units
- Reliable holding, protection and grounding for optical cables
- Suitable for ribbon and non-ribbon optical fibers
- Can be installed with value-added modular units, such as fiber splitters, WDM, etc.
- Capacity up to 720 ports



Splice & Distribution Enclosure

- Modular design for 19" standard frame
- Built in splice and distribution modules
- Each module has reliable positioning devices
- Modules can be drawn out from the enclosure
- Flexible installation and convenient operation and maintenance
- Compact size
- Capacity up to 72 ports (up to 6 splice & distribution modules)



Splice & Distribution Module

- Capacity up to 12 ports (Max 24fibers)
- Separated(left & right) structure and with a cover-plate on fusion tray
- Multi functions: optical fusion, storage and distribution
- Suitable for installation with FC, SC, LC and ST adapters



No Patch Module

- Separated(left & right) structure and with a cover-plate on fusion tray
- Multi functions: optical fusion, storage and distribution
- Suitable for pigtails: SC, LC up to 12 fibers



PLC Module

- Low Insertion loss
- Low PDL
- Compact Design
- Good channel-to-channel uniformityWide Operating
- Wavelength: From 1260nm to 1650nm
- Wide Operating Temperature: From -40°C to 85°C
- High Reliability and Stability



Ordering Information

Example: ODF - R 1 - 288 FC
1 2 3 4

1	Product Type	R = Rack System; E = Enclosure Unit; M = Module; NPM=No Patch Module; PM=PLC Module
2	Size	Size 1, 2 or 3 (see table below); Blank for module
3	Number of Ports	12, 24, 48, 72, 96, 144, 576, etc.
4	Adapter Type	FC, SC, ST, etc; Blank = unloaded

Note: Rack System will include all necessary enclosures, modules and accessories.

Ordering Guide

		Dimension	Max. Capacity	Weight
Rack System	Size 1	2000 x 900 x 300 mm ³	432 ports	*** KG
	Size 2	2200 x 900 x 300 mm ³	576 ports	***KG
	Size 3	2600 x 900 x 300 mm ³	720 ports	***KG
Enclosure	Size 1	485*300*50mm	12ports	4.2 KG
	Size 2	485*300*72mm	24 ports	4.8KG
	Size 3	485*300*125mm	48 ports	6.5KG
	Size 4	485*300*178mm	72 ports	9KG
	Size 5	485*300*232mm	96ports	10KG
	Size 6	485*300*340mm	144 ports	12KG
Module	Size 1	25 * 300 *180 mm	12 ports	0.4KG
	Size 2	50 *300 *180 mm	24 ports	0.54KG
Module no patch	Size 3	25 * 300 *180 mm	12 ports	0.42KG
PLC Module	Size 4	25 * 300 *180 mm	1*16 PLC	0.36KG
	Size 5	50 * 300 *180 mm	1*32 PLC	0.46KG