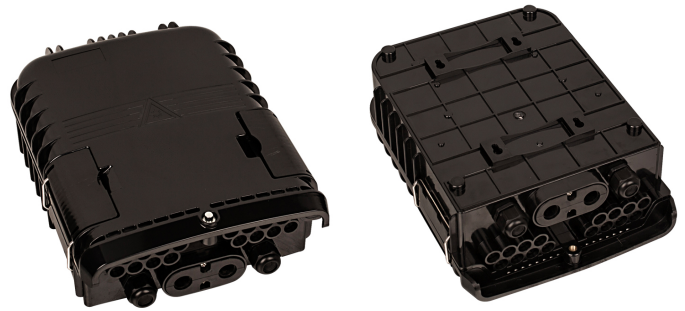


# 16 Core Fiber Optic Distribution Box

## Description

This box is used as a termination point for the feeder cable to connect with drop cable in FTTX communication network system.

It intergrates fiber splicing, splitting, distribution, storage and cable connection in one unit. Meanwhile, it provides solid protection and management for the FTTX network building.



## Features

- 1、Total enclosed structure.
- 2、Material: ABS, wet-proof、 water-proof、 dust proof、 anti-aging, protection level up to IP65.
- 3、Clamping for feeder cable and drop cable, fiber splicing, fixation, storage distribution ... etc all in one.
- 4、Cable, pigtails, patch cords are running through own path without disturbing each other, cassette type SC adaptor .installation, easy maintenance.
- 5、Distribution panel can be flipped up, feeder cable can be placed in a cup-joint way, easy for maintenance and installation.
- 6、Box can be installed by the way of wall-mounted or poled-mounted,suitable for both indoor and outdoor uses.



## Configuration

Material	Size	Max Capacity	Nos of PLC	Nos of Adaptor	Weight	Ports
Strengthen ABS	A*B*C(mm) 300*210*90	Splice 16 Fibers (1trays, 16core/tray)	1pcs of 1x8 PLC 1pcs of 1x16 PLC	/	1.35kg	4 in 16 out

## Applications

- Wall mounting and pole mounting installtion
- FTTH pre-installation and filed installation
- 5-10mm cable ports suitable for 2x3mm indoor FTTH drop cable and outdoor figure FTTH self-supporting drop cable

## Standard Accessories

- Screw: 4mm\*40mm 4pcs
- Expension bolt: M6 4pcs
- Cable tie:3mm\*10mm 6pcs
- Heat-shrink sleeve:1.0mm\*3mm\*60mm 16pcs
- Key:1pcs

